



MCI® J-Series

Leading the industry in comfort
and reliability.



With impressive styling and high performance, MCI's industry-leading J-Series coaches will take your business everywhere it needs to go and make your fleet more versatile than ever.

The J4500 and J3500 models are built on a shared design platform, keeping electrical and HVAC systems, axles/brakes/suspension, and most frame and body components common. Both models interiors have been created with longtime collaborator BMW Group's Designworks. The upgraded ambiance impresses.

Models.

Available in clean-diesel and
battery-electric configurations.



J4500

The MCI J4500 offers the industry's largest interior floor space providing best-in-class legroom and comfortable seating for up to 60 passengers.



J3500

The MCI J3500 offers comparable comfort for smaller groups, creating a more intimate level of luxury with seating for up to 44 passengers.



J4500 CHARGE™

The J4500 CHARGE zero-emission, battery-electric coach leverages EV technology from New Flyer and delivers 230 + miles of range and enhanced safety features.

Low + zero-emissions.



Zero-emission

The J4500 CHARGE battery-electric coach offers zero-emissions and delivers high-capacity coach transportation.



Low-emission

The clean-diesel J4500 and J3500 coaches comply with EPA low emission standards. On a per passenger basis, our clean-diesel coaches offer lower emissions than any current hybrid car.

MCI

Unique features, reliable benefits.

- ✓ LED lighting and optional upgraded seating, trim packages, RGB color lighting, and rear window further enhances the interior's ambiance.
- ✓ A full stainless-steel frame resists the elements and provides dependable long-term structural integrity.
- ✓ Integrated instrument panel and dash for improved functionality, ergonomics, aesthetics and reduced driver distraction.
- ✓ Proven, robust electrical system with real-time on-board diagnostics.



Repositioned engine air intake reduces the noise level in the cabin.



Electric cooling fan system improves reliability and fuel efficiency by more than 3%.



Comprehensive 30-month unlimited mileage warranty with Super 60 extended warranty.



MCI

Seating + lighting.

MCI offers fabrics, trims and flooring options that allow operators to customize the coach's interior. Two carefully chosen amenity levels offer operators a choice, including additional options for customization.

	Preferred Spec	High Spec	Standalone Option
Lighting — Cabin (LED)			
Center Ceiling Indirect Ambient Lighting	White	Color	No (standard)
Ambient Lighting on Outside of Aisle by Parcel Rack (Strip)	N/A	Color	Yes (white)
Main Cabin Center Aisle Lights	Puck (white/blue)	Puck (white only)	No (standard)
Window Side Ambient Lighting	N/A	Color	Yes (white)
Under Seat Aisle Lighting	Blue	Color	No (standard)

Lighting — Entry (LED)			
Handrails (Front & Rear)	White	Color	Yes (white)
Right and Left Side Entryway	White	Color	No (standard)
Step Tread Lighting	White	Color	Yes (white)
RGB Lighting Option	No	Yes	Yes

Seating			
Seat Type	Amaya A-220 or Sigma	Amaya Sigma, Kiel 2050 or 1020	Yes
Seat Fabric	Coordinated	Coordinated	Yes
Leather Headrest	Yes	Yes	Yes
Leather Sidebolster	No	Yes	Yes
Leather Piping	No	Yes	Yes
Driver Seat	Coordinated	Coordinated	Yes

Cabin Trim			
Flooring	Choice Std/Wood	Wood	Yes
Parcel Rack Doors	Yes	Wood-grained/carbon fiber	Yes

Entry Trim			
Flooring	Coordinated with cabin	Coordinated with cabin	Yes
Left and Right Side Panels	Coordinated fabric	Coordinated fabric	Yes
Left and Right Side Panel Trim and Entrance Door Panel	Coordinated	Wood-grained, coordinated with P/R	Yes

Note: Packages are not mandatory. Customer-specific choices of seating, fabric, flooring, and other a la carte options are permitted.

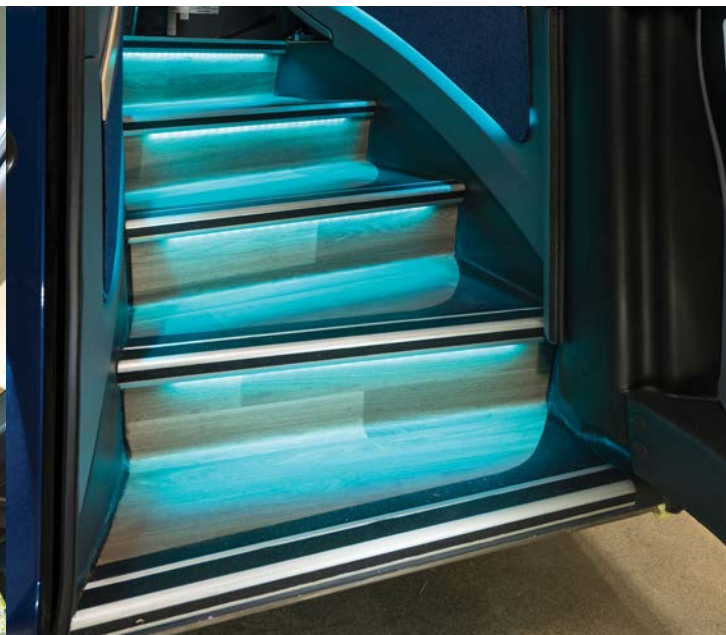




The scissor-style front window blinds recess into the redesigned front cap and blend aesthetically with the parcel racks to improve the panoramic view for passengers.



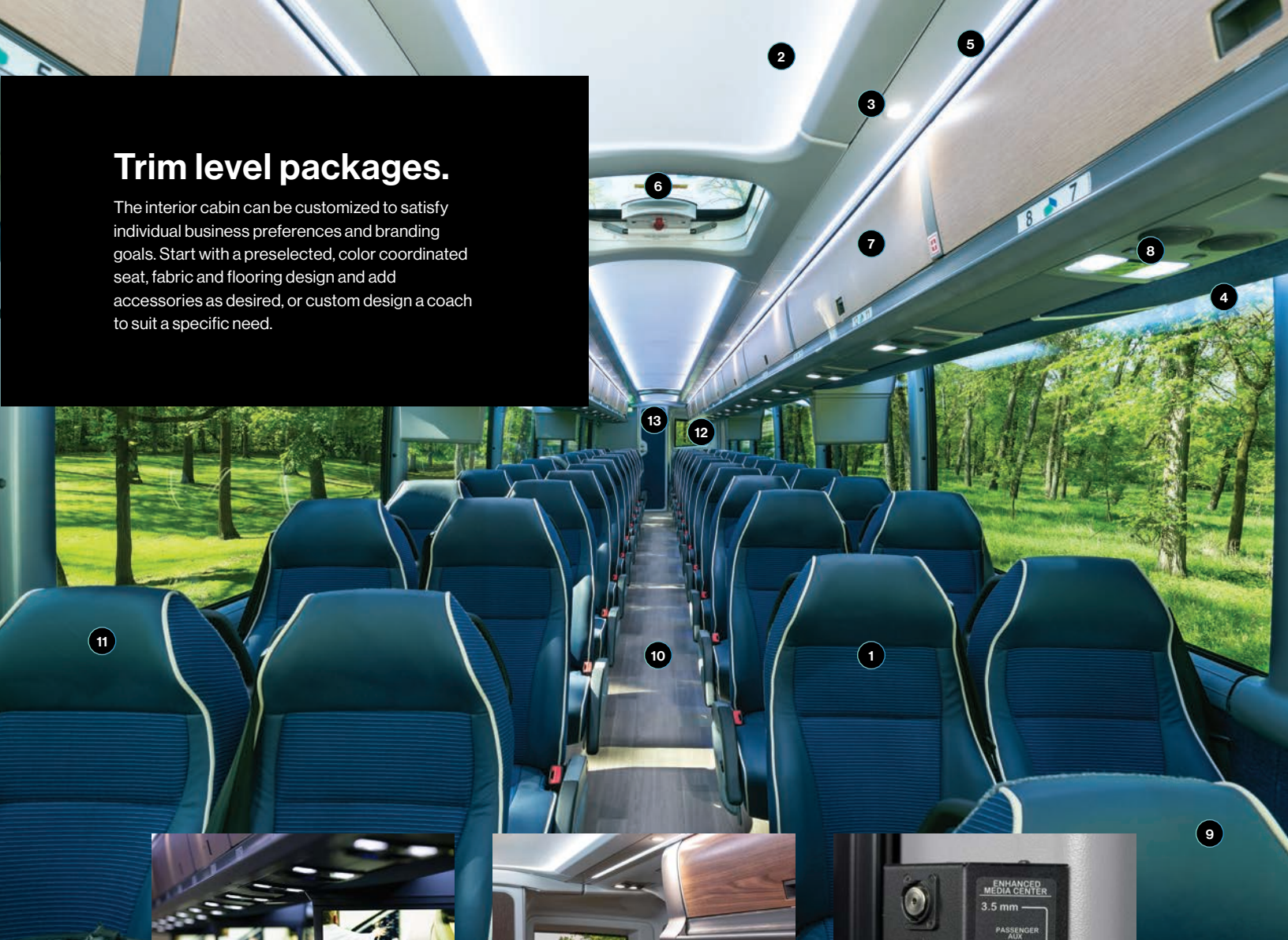
The optional tempered glass emergency hatch becomes another source for natural light.



Illumination on the spiral stairway and revised handrail design enhances safety. Optional RGB illumination provides an impressive experience for passengers.

Trim level packages.

The interior cabin can be customized to satisfy individual business preferences and branding goals. Start with a preselected, color coordinated seat, fabric and flooring design and add accessories as desired, or custom design a coach to suit a specific need.



Six 15" wide-screen HD monitors with new A/V system (four monitors on the J3500).

Updated rear cross seat area can accommodate mini galleys and other customer-specific design needs.

An optional media panel, developed for easy tour guide access, allows USB charging and HDMI input to play computer content over the monitors.

1. Full fabric luxury interior with custom trim available
2. Standard LED indirect ceiling lighting
3. Standard LED spot lights
4. Optional LED window lighting
5. Optional LED strip lighting
6. Optional tempered glass roof hatches
7. Best-in-class parcel rack space with redesigned doors and enhanced finish options
8. Adjustable passenger modules with LED integrated seatbelt signs
9. MCI exclusive theatre-style tiered seating in the first three rows provides exceptional passenger views

10. Integrated center aisle ramp improves ease of entry and exit
11. Contemporary seating options available with or without integrated headrests
12. Optional rear window
13. Reconfigured lavatory



Impress passengers with customizable entry door welcome light.

MCI

Reliable service and support.

MCI service and support delivers a relationship-driven and responsive approach to customer care.



Comprehensive support that includes in-field expertise, technical call center and 24/7 roadside assistance.



Customizable programs to fit your financial needs through NFI Financial Solutions™.



MCI Service Centers are where you'll find all the help you need including routine maintenance and warranty to complex troubleshooting.



Ongoing technical training from the industry's only Automotive Service Excellence (ASE) accredited MCI Academy technician training center.



Parts support from NFI Parts®, North America's largest bus and motor coach parts supplier.

MCI

Safety.

MCI is committed to developing and adopting the technologies that benefit operators, drivers and passengers with the highest possible level of safety.

The J-Series offers:



Three-point passenger seatbelts.



Tire Pressure Monitoring Systems (TPMS).



Electronic Stability Control (ESC).

High tech safety systems.

- ✓ Patented Digital Wheel End Sensing (DWES) systems help measure wheel end temperatures and monitor individual wheel ends for potential issues.
- ✓ Optional next-generation 360° Camera provides a bird's-eye view around the entire coach to significantly aid vision while maneuvering at low speeds.
- ✓ Collision mitigation technology includes stationary object detection and lane departure warnings.
- ✓ Automatic fire suppression.

Advanced Driver Assistance Systems

MCI also leads in Advanced Driver Assistance Systems (ADAS) as the first North American coach manufacturer to offer Bendix Wingman Fusion adaptive cruise control/collision mitigation system. The system includes a windshield-mounted, forward-facing camera, plus a radar unit mounted in the front bumper. Coupled with advanced object recognition software, the system is able to identify both moving and stationary vehicles as well as lane markers and roadway signage in real-time.

Bendix Fusion offers the following enhanced functionality:



Stationary Vehicle Braking (SVB) uses radar, a forward facing camera and vehicle recognition software to identify and react to potential hazards.



Lane Departure Warning (LDW) tracking can recognize lane markers and issue a warning on the instrument panel if the vehicle begins to drift into another lane.



Traffic Sign Recognition (TSR) identifies common road signs, such as speed limit signs.



MCI

MCI J-Series model specification highlights.

Legend

S	Standard in basic coach
O	Optional addition in basic coach
YES	Typically included in trim level or option package
NO	Typically not included in trim level of option package
NEW	Featured or new addition
UPDATED	Featured or updated addition

	Base Spec		Preferred Spec		High Spec		Updated	
	J4500	J3500	J4500	J3500	J4500	J3500	J4500	J3500
Safety and Security								
Bendix® ESP (Electronic Stability Program)	S	S	S	S	S	S		
Bendix® Wingman Fusion System with Adaptive Cruise Control and Collision Mitigation Functionality	O	O	NO	NO	YES	YES	New	New
Integrated tire-pressure monitoring system with always-on sensors	S	S	S	S	S	S		
Amerex fire-suppression system and engine compartment fire detection	S	S	S	S	S	S		
Digital Wheel End Sensing (DWES) to detect wheel end faults	S	S	S	S	S	S		
FMVSS 210 load compliant seat track and mounting system with infinite adjustability	S	S	S	S	S	S		
Frameless single pane passenger windows with laminated safety glass and dual-latch emergency release mechanism	S	S	S	S	S	S		
Frameless dual pane passenger windows with tempered / laminated safety glass and dual-latch emergency release mechanism	O	O	YES	YES	YES	YES		
Spare tire compartment roller	S	S	S	S	S	S		
Side-view cameras integrated into mirror head	O	O	NO	NO	NO	NO		
360° camera system	O	O	NO	NO	YES	YES	New	New
500 GB digital recording system (4 exterior cameras) or 1 TB DVR (4 interior & 4 exterior cameras)	O	O	NO	NO	YES	YES	New	New
Powertrain and Economy								
Cummins X12 w/engine brake, 410 hp, 1,450 lb-ft torque	S	N/A	S	N/A	S	N/A	New	
Cummins X12 w/engine brake, 455 hp, 1,550 lb-ft torque	O	N/A	O	N/A	O	N/A	New	
Cummins L9 w/engine brake, 350 hp, 1,150 lb-ft torque	N/A	S	N/A	S	N/A	S		
Allison Gen V transmission with prognostics capability	S	S	S	S	S	S		
Fuel economy optimized rear axle ratios delivering up to 19% better fuel economy in certain configurations	S	S	S	S	S	S		
NFI Connect™ option for enhanced engine diagnostics	O	O	YES	YES	YES	YES	New	New
Relocated engine air intake system including standard pre-filter / water separator and enhanced engine compartment service lighting	S	S	S	S	S	S	New	New
Handling, Ride and Braking								
Independent front suspension system with labyrinthically sealed unitized wheel ends now rated at 17,000 lbs	S	N/A	S	N/A	S	N/A	Updated	
Independent front suspension system with labyrinthically sealed unitized wheel ends rated at 14,500 lbs	N/A	S	N/A	S	N/A	S		Updated
Drive axle rated at 23,000 lbs and independent suspension tag axle rated at 16,500 lbs	S	N/A	S	N/A	S	N/A		
Drive axle rated at 27,500 lbs	N/A	S	N/A	S	N/A	S		
Bendix® all-wheel ADB 22X™ disc brakes	S	S	S	S	S	S		
Leather-wrapped tilt and telescoping steering wheel with integrated controls and ZF variable ratio steering	S	S	S	S	S	S		
Wide-ride suspension system with SACHS Shocks	S	S	S	S	S	S		
Passive rear steering system provides amazingly tight 40' 11" turning radius	S	N/A	S	N/A	S	N/A		
Exterior								
Semi-monocoque low-corrosion stainless steel body	S	S	S	S	S	S		
Fiberglass composite front and rear caps, exterior skin and baggage doors with electric locks	S	S	S	S	S	S		
Improved double sealed, air-operated entrance door with integrated rub rail	S	S	S	S	S	S		
Fog lamps with impact resistant polycarbonate lenses	S	S	S	S	S	S		
Hub-piloted steel wheels, 22.5 x 9.0	S	S	S	S	S	S		
Alcoa aluminum wheels now with more durable coating, 22.5 x 9.0	O	O	YES	YES	YES	YES		
BF Goodrich ST230 tires 315/80 R22.5, L-rated are the new basic tires. Firestone are optional.	S	S	S	S	S	S		
Drip rail lighting	O	O	YES	YES	O	O	New	New

MCI

MCI J-Series model specification highlights.

Legend

S	Standard in basic coach
O	Optional addition in basic coach
YES	Typically included in trim level or option package
NO	Typically not included in trim level of option package
NEW	Featured or new addition
UPDATED	Featured or updated addition

	Base Spec		Preferred Spec		High Spec		Updated	
	J4500	J3500	J4500	J3500	J4500	J3500	J4500	J3500
Passenger Interior, Appointments and Convenience								
Best-in-class interior passenger space with comfortable seating for up to 60 passengers with or without WCL	S	N/A	S	N/A	S	N/A	New	
Best-in-class interior passenger space with comfortable seating for up to 44 passengers with or without WCL	N/A	S	N/A	S	N/A	S		New
Amaya A-220 thin-back seat for improved passenger space, with separate headrest and integral 3-point seatbelts (56 passenger std)	S	N/A	S	N/A	S	N/A	Updated	
Amaya A-220 thin-back seat for improved passenger space, with separate headrest and integral 3-point seatbelts (40 passenger std)	N/A	S	N/A	S	N/A	S		Updated
Kiel 2050 or 1020 seating featuring modern styling with integrated headrest and integral 3-point seatbelts	O	O	NO	NO	YES	YES	Updated	Updated
Amaya Sigma or GT seating featuring modern styling with integrated headrest and integral 3-point seatbelts	O	O	NO	NO	YES	YES	Updated	Updated
Larger driver side rear transom window with over 500% more viewing area	S	S	S	S	S	S	New	New
Chemical lavatory without wash basin	S	S	S	S	S	S		
Secondary lavatory holding tank	O	O	YES	YES	YES	YES		
MCI-exclusive spiral entrance stairway with ergonomic grab rails	S	S	S	S	S	S		
MCI-exclusive theatre-style tiered seating in first three rows provides exceptional passenger views, featuring integrated center aisle ramp for easy entry and exit	S	S	S	S	S	S		
LED indirect ceiling and stepwell panel lighting, LED spot lights in ceiling with blue night light function. All interior lighting is dimmable and includes a one-touch "cleaning" feature.	S	S	S	S	S	S	New	New
Enhanced LED interior lighting choices including stepwell nosing lights, stepwell handrail lights, ceiling strip lights, and window lights	S	S	ENTRY	ENTRY	YES	YES	New	New
RGB interior lighting feature including six pre-programmed colors (red, blue, green, cyan, magenta, yellow) plus white	O	O	NO	NO	YES	YES	New	New
Customizable LED entrance door welcome light	O	O	NO	NO	YES	YES	New	New
Enhanced finishes on parcel rack doors and stepwell trim strips (light, medium, dark woodgrain and carbon-fiber)	O	O	NO	NO	YES	YES	New	New
Industry leading capacity enclosed parcel racks featuring more robust components and improved aesthetics	O	O	YES	YES	YES	YES	New	New
Customizable fabric, flooring and interior trim options	S	S	S	S	S	S	New	New
Removable curb and roadside hostess table	O	O	YES	YES	YES	YES	New	New
Rear window improves passenger visibility and ambiance	O	O	NO	NO	NO	NO	New	New
Glass roof hatch improves ambient lighting levels	O	O	NO	NO	YES	YES	New	New
Larger, reconfigured lavatory with vandal-resistant features	S	S	S	S	S	S	New	New
Braun wheelchair lift with newly configured sliding seats for even seat spacing	O	O					Updated	Updated
Shortened roadside parcel rack improves interior ambiance and floorplan flexibility	S	S	S	S	S	S	New	New
Driver's Cockpit, Instrumentation and Controls								
ISRI 6832 3-point driver seat with seatbelt alarm features a new lower seat pedestal to improve suspension travel	S	S	S	S	S	S	Updated	Updated
Multifunction dash display with greatly enhanced functionality, improves driver ergonomics and offers "plain English" diagnostic messages	S	S	S	S	S	S	New	New
Multifunction steering wheel featuring courtesy "Yo" light switch to acknowledge passing vehicles	S	S	S	S	S	S		
Enhanced pre-trip walk-around test check for easier inspections	S	S	S	S	S	S		
Driver's toe kick, redesigned storage drawers with built-in USB outlet, streamlined LH console with larger cup holder and 12V plus USB charging ports	S	S	S	S	S	S	New	New
Power windshield blinds without guide rods, that recess into the front upper cap when not in use	S	S	YES	YES	YES	YES	New	New
Unbreakable driver's defrost vents	S	S	S	S	S	S	New	New
Audio, Video and Electronics Systems								
AM/FM/CD/DVD with six 15" HDMI wide screen monitors (Only four monitors on the J3500)	S	S	S	S	S	S		
Enhanced audio with dual subwoofers, 15 x 2" tweeters and additional amplifier	O	O	NO	NO	YES	YES		
Wireless microphone	O	O	YES	YES	YES	YES		
iPod & MP3 connection integrated in head unit	O	O	NO	NO	YES	YES		
Wi-Fi system	O	O	NO	NO	NO	NO	Updated	Updated
110V outlets w/USB at every seat, including 4000 Watt inverter and integral battery charger	O	O	YES	YES	YES	YES	New	New
Media panel w/HDMI A/V and USB + 3.5mm audio inputs in tour guide area	O	O	NO	NO	YES	YES	New	New
Saucon asset tracking system with geo-fencing and OBR (on-board recording) capability	O	O	NO	NO	NO	NO		
2V power supply located in parcel rack for Wi-Fi installation, or other added accessory	S	S	S	S	S	S		

MCI

MCI J-Series model specification highlights.

Legend

S	Standard in basic coach
O	Optional addition in basic coach
YES	Typically included in trim level or option package
NO	Typically not included in trim level of option package
NEW	Featured or new addition
UPDATED	Featured or updated addition

Coach Operation & Performance: Improvements and Enhancements

	Base Spec		Preferred Spec		High Spec		Updated	
	J4500	J3500	J4500	J3500	J4500	J3500	J4500	J3500
Latest generation Parker/Vansco fully multiplexed solid-state electrical system featuring optimized military grade components	S	S	S	S	S	S		
Ultra durable front and rear bumper systems	S	S	S	S	S	S		
Long-life, high-visibility LED high/low beam forward lighting	O	O	NO	NO	YES	YES		
Brushless motors on HVAC evaporator and condenser for long life and low maintenance	S	S	S	S	S	S		
Radiator and charge air cooler with state-of-the-art E-coated frame and high-strength aluminum alloy designed and tested for highly corrosive environments	S	S	S	S	S	S		
E-coated radiator and charge air cooler heat exchangers	O	O	NO	NO	NO	NO		
Corrosion resistant condenser with state-of-the-art E-coating on tubes & fins	S	S	S	S	S	S		
Swing-out radiator/charge air cooler module with E-Fan system	S	S	S	S	S	S		
Extreme duty tag axle unload valves for MDSS / Bendix air system	S	S	S	S	S	S		
Rotary main battery disconnect switch	S	S	S	S	S	S		
MCI® A/C compressor with improved tensioning system and idler	S	S	S	S	S	S	Updated	Updated
Acrylic rear tail lamp panels	S	S	S	S	S	S	New	New
Service door hinges with greaseable fittings	S	S	S	S	S	S		
Corrosion control enhancements including improved SST rear J-box, more SST bracketry and improved processes for applying HydroArmor in the factory (air tanks, under carriage coverage)	S	S	S	S	S	S	New	New
Improved docking and cornering light logic for enhanced low-speed visibility and passenger entry /exit	S	S	S	S	S	S	Updated	Updated
Removable return air duct for easier servicing	S	S	S	S	S	S		
45,000 BTU ProHeat or 120,000 BTU Valeo (Spheros/Webasto) auxiliary heaters	O	O	YES	YES	YES	YES		
2 x 250 Amp Delco (Borg Warner) brushless alternators for improved reliability	S	N/A	S	N/A	S	N/A		
2 x 180 Amp Cummins alternators for improved reliability	N/A	S	N/A	S	N/A	S		
Ruggedized lavatory dump valve with easy to use lever handle	S	S	S	S	S	S		
Flat composite baggage bay flooring for improved corrosion resistance and driver ease of use	S	S	S	S	S	S		

Support, Services & Warranty

Industry-leading standard 30 month limited warranty	S	S	S	S	S	S		
Expanded Super 60 warranty extension on select components	S	S	S	S	S	S		
Extended OEM warranties on engine and transmission	O	O	YES	YES	YES	YES		

Application Specific Performance Groups

Audio, entertainment and connectivity group	O	O	NO	NO	NO	NO		
Severe Duty—dust and off—road package	O	O	NO	NO	NO	NO		
Tour company compliance group	O	O	NO	NO	NO	NO		
Trim and appointment upgrade group	O	O	NO	NO	NO	NO		
Extreme hot/cold weather packages	O	O	NO	NO	NO	NO		

MCI



J-Series

MCIcoach.com/j-series



MCIcoach.com/j-series