

# Driver's Guide

## J4500

### 2007 EPA Engine Tell-Tales

When you see this:



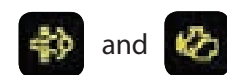
**Regeneration Lamp (DPF) (Yellow)**  
Tell-tale illuminates when a regeneration is required. Tell-tale is OFF during regeneration.



**High Exhaust Temperature Lamp (HET) (Yellow)**  
This Tell-tale will illuminate when the coach is moving less than 5 mph (approx.) and the exhaust outlet temperature exceeds the predetermined level.



**Malfunction Indicator Lamp (MIL) (Red) (on DDC engines ONLY)**  
Malfunction Indicator Tell-tale Lamp. Tell-tale indicates a failure of an emission system component.



➔ Engine derated, regeneration required. Increase speed above 5 mph or perform stationary regeneration within 30 minutes.



➔ Engine derated or shut down engaged. Regeneration locked out. Service required. Contact authorized service center.

### Driver Interaction

Do this:

➔ Regeneration is required within the next 5-6 hrs (if ON solid) or 1-2 hrs (if flashing). Drive the coach above 5 mph or perform stationary regeneration. Refer to the latest versions of MCI Service Bulletin 2966 for CAT C13, 2969 for Cummins ISM and 2965 for DDC S60 at [www.mcicoach.com](http://www.mcicoach.com)

➔ Nothing. Telltale is only active when coach is below 5 mph and in the regeneration process. When illuminated, the exhaust temperature is > 750° F (400° C). This telltale can be ON in conjunction with other telltales.

➔ Seek service from a Detroit Diesel service facility. Applicable to DDC Series 60 engines only.

### MCI Sales and Service Centers

10 East Golf Road  
Des Plaines, IL 60016 USA  
(866) 624-2622

14 Harmon Drive  
Blackwood, NJ 08012 USA  
(800) 262-1287

1400 Barre Street  
Montreal, QC H3C 1N4 Canada  
(800) 663-3328

3718 LB McLeod Road  
Orlando, FL 32805 USA  
(800) 390-0287

9787 Clifford Drive  
Dallas, TX 75220 USA  
(800) 248-4942

10850 Portal Drive  
Los Alamitos, CA 90720 USA  
(800) 777-4101

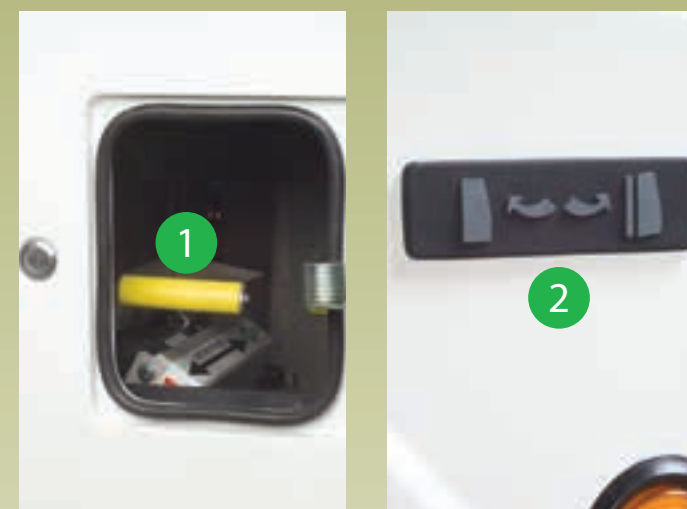
1501 Albany Boulevard  
Atlantic City, NJ 08401  
(800) 263-1041

215 Maddox Simpson Parkway  
Lebanon, TN 37090  
(800) 927-5041

**MCI Major Repair Center**  
520 North Spring Street  
Loudonville, OH 44842  
(877) 754-4404

**Parts**  
To order parts:  
(800) 323-1238 (US)  
(800) 665-0155 (Canada/ English)  
(800) 546-3457 (Canada/Francais)

**Technical Support and  
Emergency Roadside Assistance**  
(800) 241-2947



1. Main Battery Disconnect Switch
2. Exterior Entrance Door Switch
3. Stationary Regen Switch
4. Wheelchair Lift
5. Wheelchair Lift Hand Held Controller
6. Cruise Control—ON Switch
7. Cruise Control—OFF Switch
8. Cruise Control—SET Switch
9. Cruise Control—RESUME Switch
10. Cruise Control—CANCEL Switch
11. Jake Brake Control—OFF
12. Jake Brake Control—LOW
13. Jake Brake Control—MEDIUM
14. Jake Brake Control—HIGH



MOTOR COACH  
INDUSTRIES

*Going further!*

[www.mcicoach.com](http://www.mcicoach.com)



MOTOR COACH  
INDUSTRIES

Effective with unit number 64455



1. Wheelchair Lift Master Switch (Optional/Not shown)
2. Cup holder
3. Power Blind Switches (Optional)
4. Front Service Compartment Door Release
5. 12 Volt Power Source
6. 12 Volt Binding Post
7. Emergency Park Brake Release Valve
8. Mirror Heat Switch
9. Mirror Controls
10. Transmission Control

#### 2007 EPA Engine Code Retrieval–Speedometer Display



To navigate to the FAULTS screen on the speedometer alphanumeric display:

- Press the MODE button 5 times, to display the DIAGNOSTIC screen,
- Press the SET button 1 time, to display the AUTO screen,
- Press the MODE button 2 times, to display the FAULTS screen,
- Press the SET button 1 time, to display the Parameter Group Number (PGN) / “code” screen,
- Press the SET button 1 time, to display the SPN / Source screen,
- Press the SET button 1 time, to display the FMI screen.

Engine Code Example: 27 (4) – EGR Valve Position Circuit / Voltage Below Normal or Shorted to Low Source

Source Code: 0 (Engine) P (SPN): 27 (FMI): 4

#### Dashboard Controls

1. LH Baggage Lock Switch
2. RH Baggage Lock Switch
3. Reading Lights Switch
4. Rear Rise Switch
5. Kneeling Switch
6. Entrance Door Open/Close Switch
7. Baggage Bay Lights Switch
8. Driver’s Light Switch
9. Dash Glow/Dimmer
10. Road Lights Switch
11. Aisle Lights Switch
12. Stepwell Lights Switch
13. Hazard/Warning Lights Switch
14. Tag Axle Unload Switch
15. SmarTire SmartWave Dual LED Display
16. Mud/Snow Switch
17. ABS Code Switch
18. Fast Idle Switch
19. Engine Override Switch
20. Master Power Ignition Switch
21. Engine Start Switch
22. Parcel Rack Ventilation Switch
23. Auxiliary Heater Switch
24. Driver’s Fan ( Defrost )
25. Drivers Heat Control
26. Micromate Control Panel
27. Turn Signal / Air Horn / High Beam / Windshield Washer and Wipers Controller
28. Steering Column Adjustment
29. Park Brake Valve
30. Entrance Door Air Dump Valve
31. Vent
32. Instrument Panel
33. Transmission Touch Pad Module
34. Voltmeter Gauge
35. Oil Pressure Gauge
36. Coolant Temperature Gauge
37. Engine Tachometer
38. Speedometer
39. Front Air Pressure Gauge
40. Rear Air Pressure Gauge
41. Fuel Gauge
42. SmarTire SmartWave Full Function Display (Optional)
43. Tell tales
44. CD Player/Receiver

